

Email service on “brenta.disi.unitn.it”

Updating clients configuration

Updating email service

- * DISI email service, provided by “brenta.disi.unitn.it” server, are required to comply with UniTN email security guidelines. This prompts for email service re-configuration, hence:
 - * **“Clear-text” services for retrieving (POP, IMAP) and sending (SMTP) messages are going to be disabled**
 - * **Current secure TLS/SSL-based services (POPS, IMAPS and SMTPS) (already in place) are going to become exclusive**
 - * **Email clients configuration update is due** (for those who didn't do it already)

Microsoft Outlook - 1

The image shows two overlapping windows from Microsoft Outlook. The background window is the 'Account Settings' dialog, and the foreground window is the 'Internet E-mail Settings' dialog.

Account Settings

E-mail Accounts

Add New Account

Internet E-mail Settings
Each of these settings are required to get your e-mail account working

User Information

Your Name:

E-mail Address:

Server Information

Account Type:

Incoming mail server:

Outgoing mail server (SMTP):

Logon Information

User Name:

Password:

Remember password

Require logon using Secure Password Authentication (SPA)

Internet E-mail Settings

General | Sent Items | Deleted Items

Outgoing Server | Connection | Advanced

Server Port Numbers

Incoming server (IMAP):

Use the following type of encrypted connection:

Outgoing server (SMTP):

Use the following type of encrypted connection:

Server Timeouts

Short Long 1 minute

Folders

Root folder path:

OK Cancel

< Back Next > Cancel

Microsoft Outlook - 2

The image shows two overlapping windows from Microsoft Outlook. The background window is the 'Account Settings' dialog, and the foreground window is the 'Internet E-mail Settings' dialog.

Account Settings - E-mail Accounts

Add New Account

Internet E-mail Settings
Each of these settings are required to get your e-mail account working

User Information

Your Name:

E-mail Address:

Server Information

Account Type:

Incoming mail server:

Outgoing mail server (SMTP):

Logon Information

User Name:

Password:

Remember password

Require logon using Secure Password Authentication (SPA)

Internet E-mail Settings

General | Sent Items | Deleted Items

Outgoing Server | Connection | Advanced

My outgoing server (SMTP) requires authentication

Use same settings as my incoming mail server

Log on using

User Name:

Password:

Remember password

Require Secure Password Authentication (SPA)

OK Cancel

More Settings ...

< Back Next > Cancel

Thunderbird

Nome: Nome da visualizzare

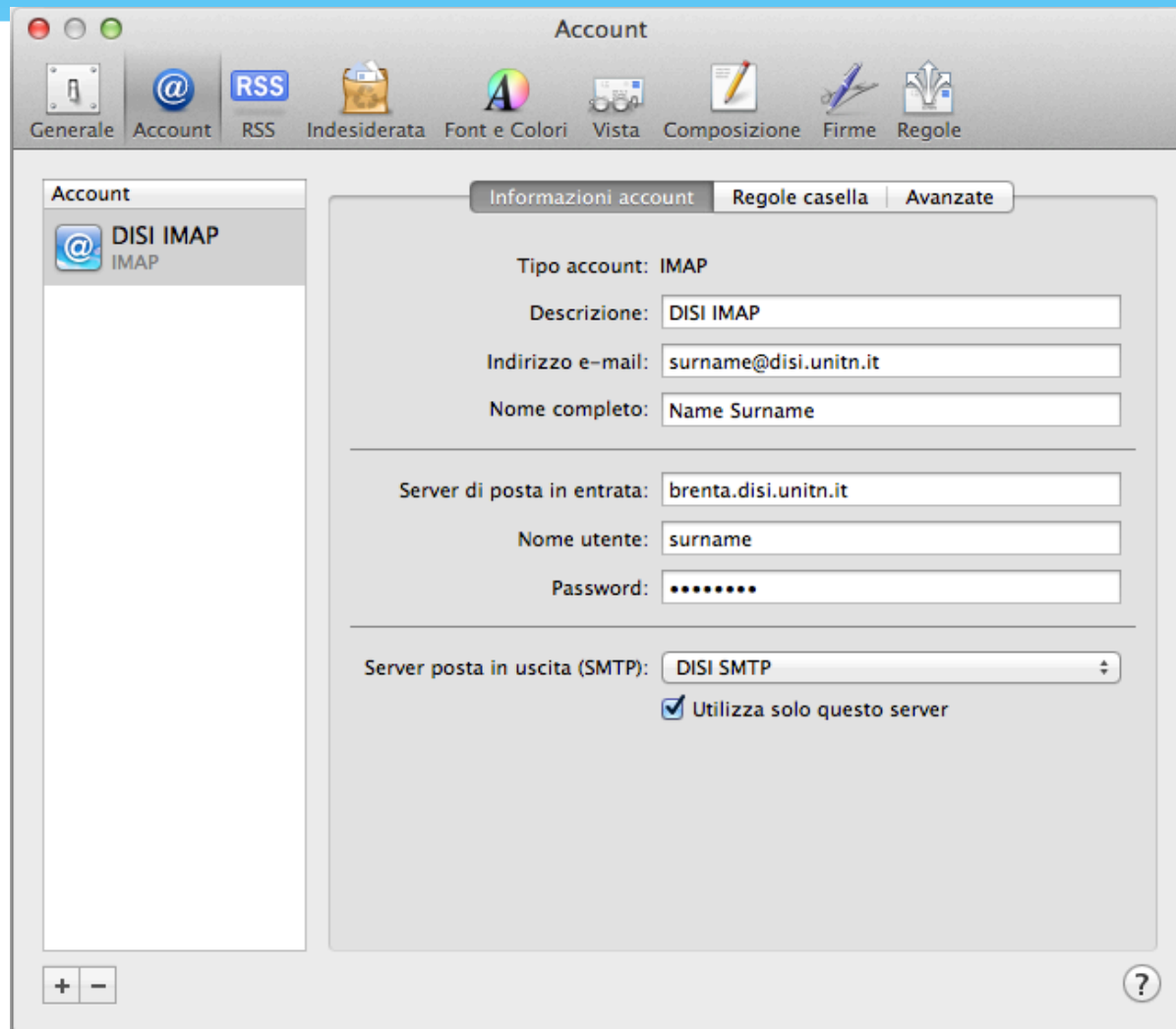
Indirizzo email:

Password:

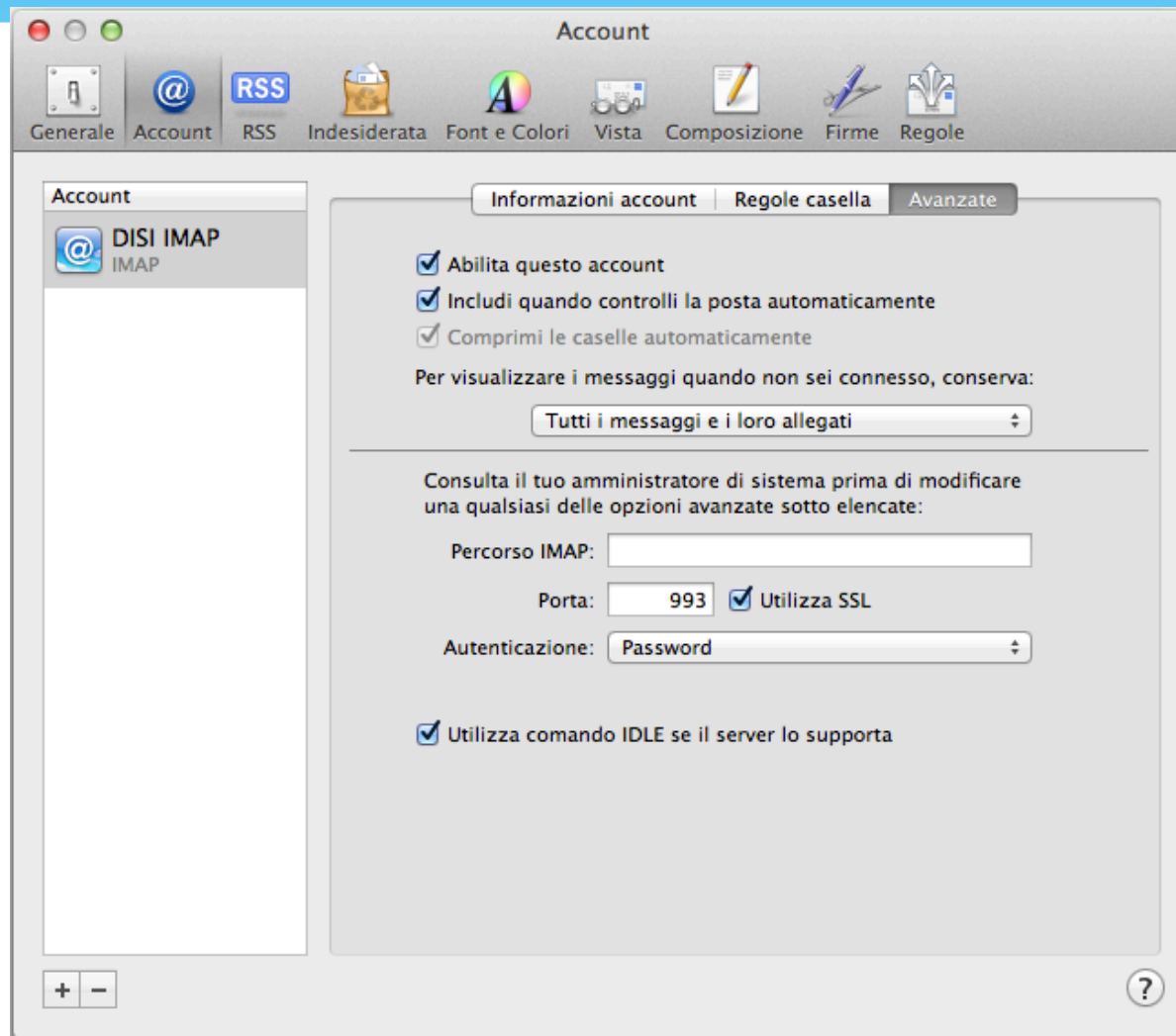
Ricorda password

	Nome server	Porta	SSL	Autenticazione	
In entrata:	<input type="text" value="IMAP"/>	<input type="text" value="brenta.disi.unitn.it"/>	<input type="text" value="993"/>	<input type="text" value="SSL/TLS"/>	<input type="text" value="Password normale"/>
In uscita:	<input type="text" value="SMTP"/>	<input type="text" value="brenta.disi.unitn.it"/>	<input type="text" value="465"/>	<input type="text" value="SSL/TLS"/>	<input type="text" value="Password normale"/>
Nome utente:	<input type="text" value="cognome"/>				

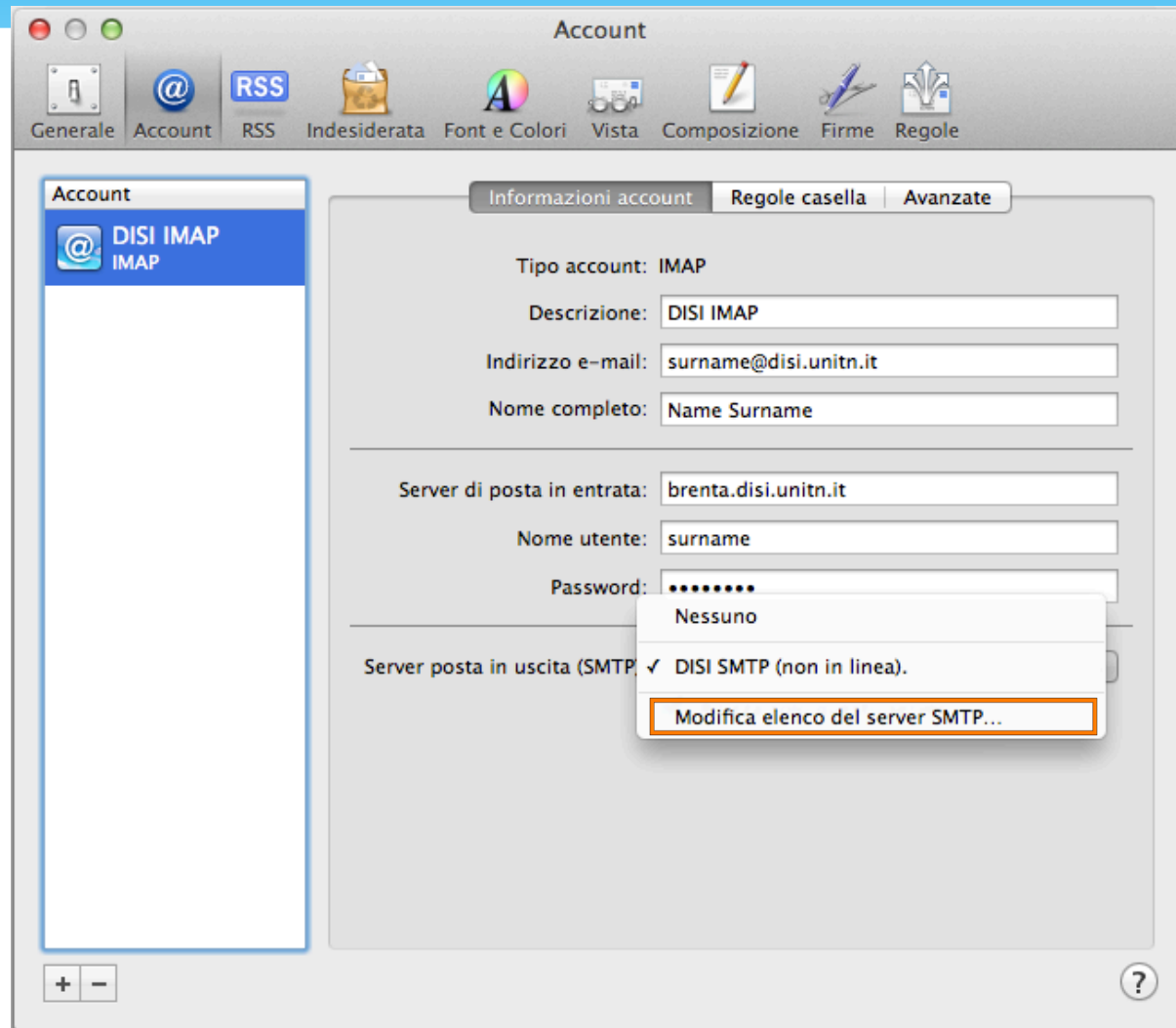
Apple Mail - 1



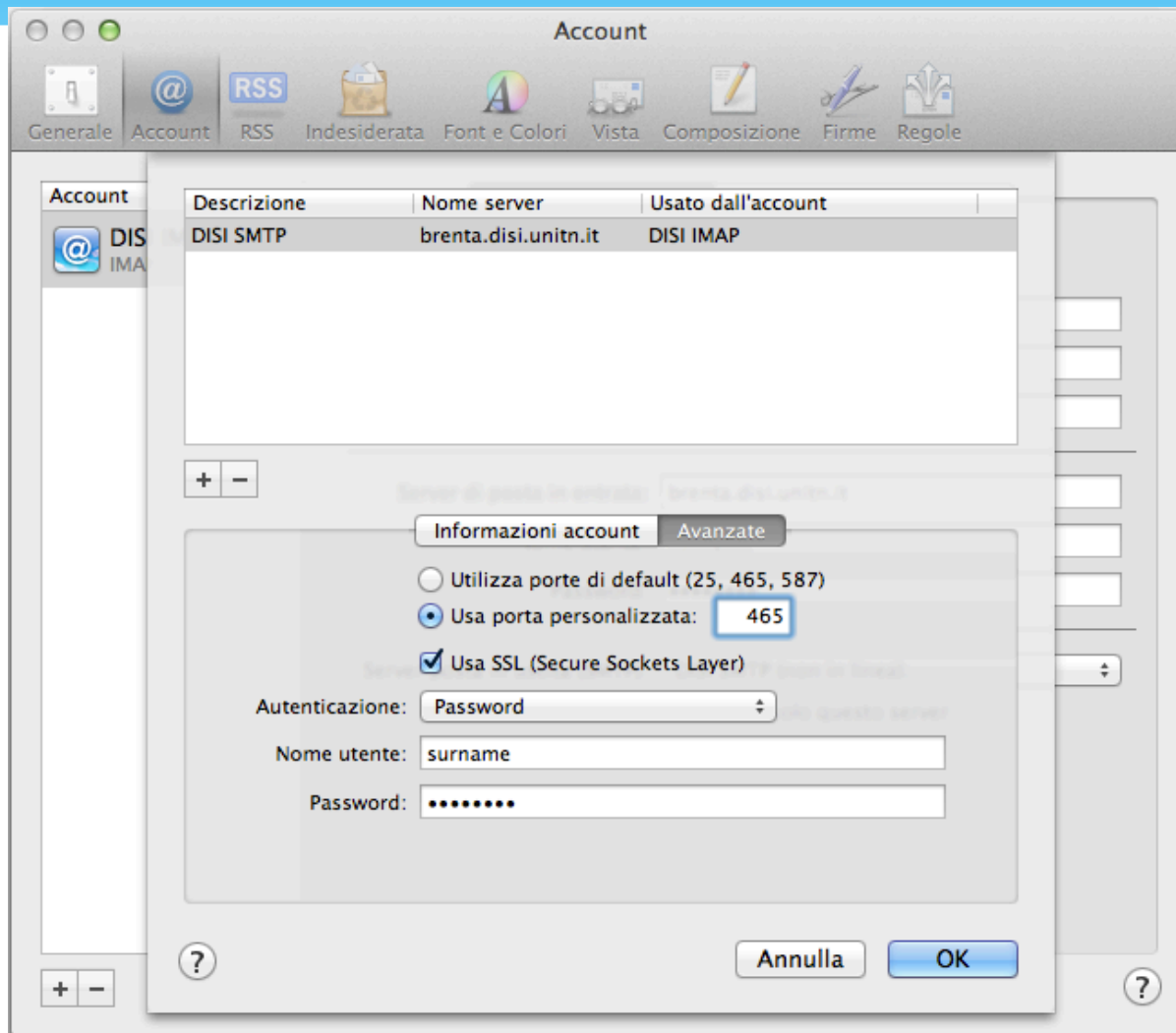
Apple Mail - 2



Apple Mail - 3



Apple Mail - 4



(al)pine

Type Setup, then Config:

```
ALPINE 2.00  SETUP CONFIGURATION  Folder: /var/spool/mail/surname  No Messages

Personal Name          = Name Surname
User Domain            = disi.unitn.it
SMTP Server (for sending) = brenta.disi.unitn.it:465/user=surname/ssl/novalidate-cert
NNTP Server (for news) = <No Value Set>
Inbox Path              = {brenta.disi.unitn.it:993/user=surname/ssl/novalidate-cert}inbox
Incoming Archive Folders = <No Value Set>
Pruned Folders         = <No Value Set>
Default Fcc (File carbon copy) = <No Value Set: using "sent-mail">
Default Saved Message Folder = <No Value Set: using "saved-messages">
Postponed Folder       = <No Value Set: using "postponed-msgs">
Read Message Folder    = <No Value Set>
Form Letter Folder     = <No Value Set>
Trash Folder           = <No Value Set: using "Trash">
Literal Signature      = <No Value Set>
Signature File         = <No Value Set: using ".signature">
Feature List           =
  Set      Feature Name
  ---      -
  [ Composer Preferences ]
  [X] Allow Changing From (default)
  [ ] Alternate Compose Menu
  [ ] Alternate Role (#) Menu
Customized Headers     = Reply-to: surname@disi.unitn.it

? Help      E Exit Setup      P Prev      - PrevPage  A Add Value  % Print
O OTHER CMDS  C [Change Val]  N Next      Spc NextPage D Delete Val  W WhereIs
```