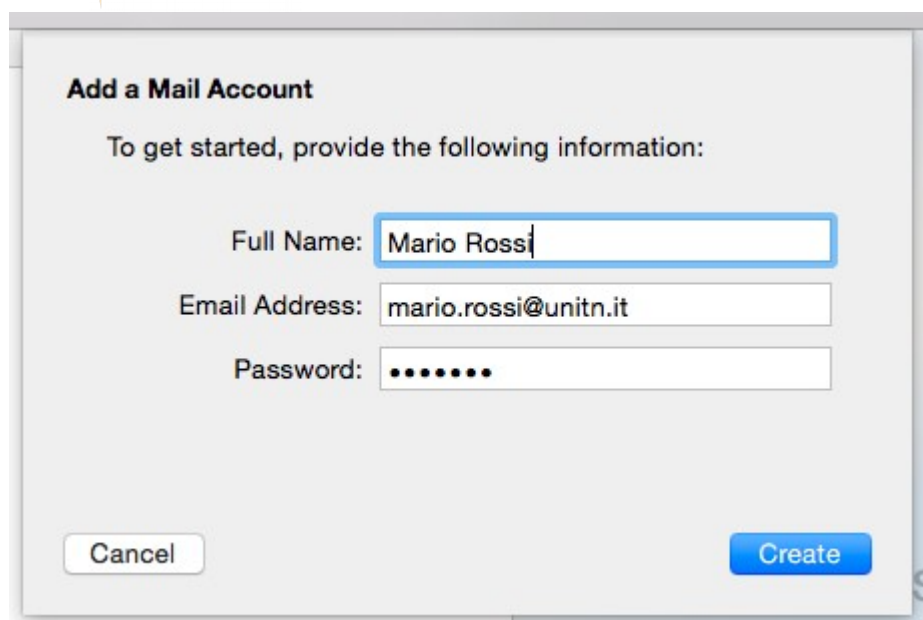
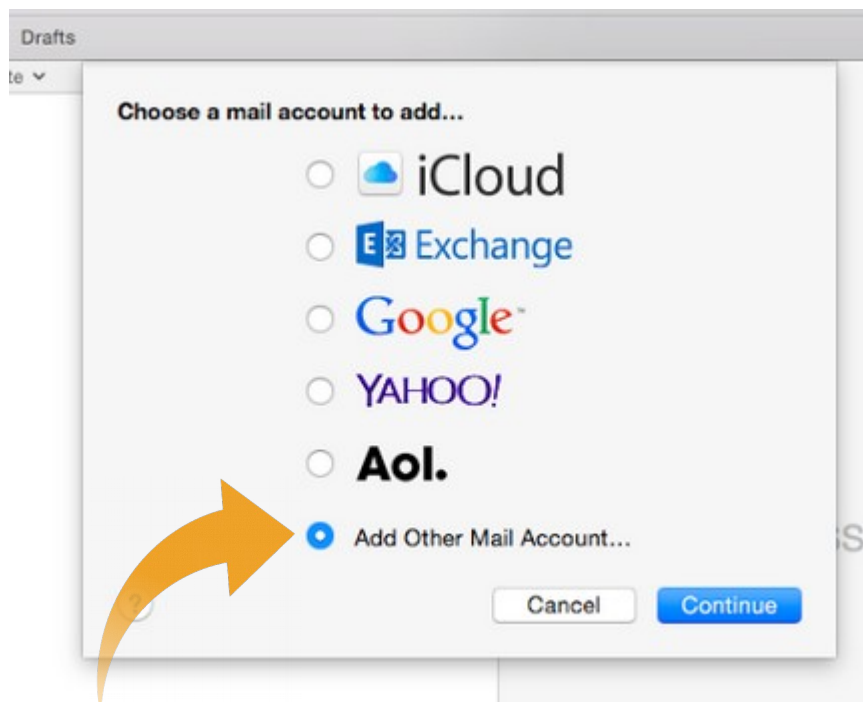
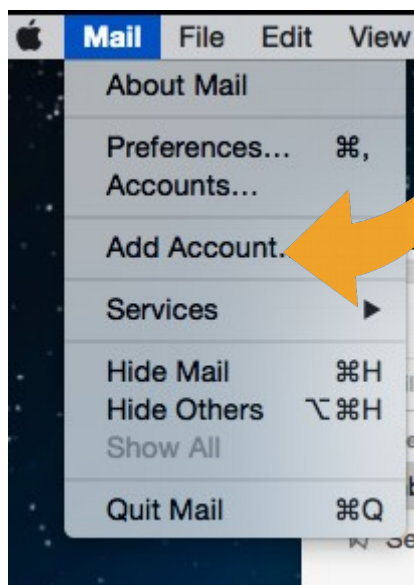


# Creare uno nuovo account GMAIL UNITN

Mail → Add Account



### Incoming Mail Server Info

Account Type:  IMAP  POP

Mail Server:

User Name:

Password:

### Incoming Mail Server Info

Path Prefix:

Port:   Use SSL

Authentication:

### Outgoing Mail Server Info

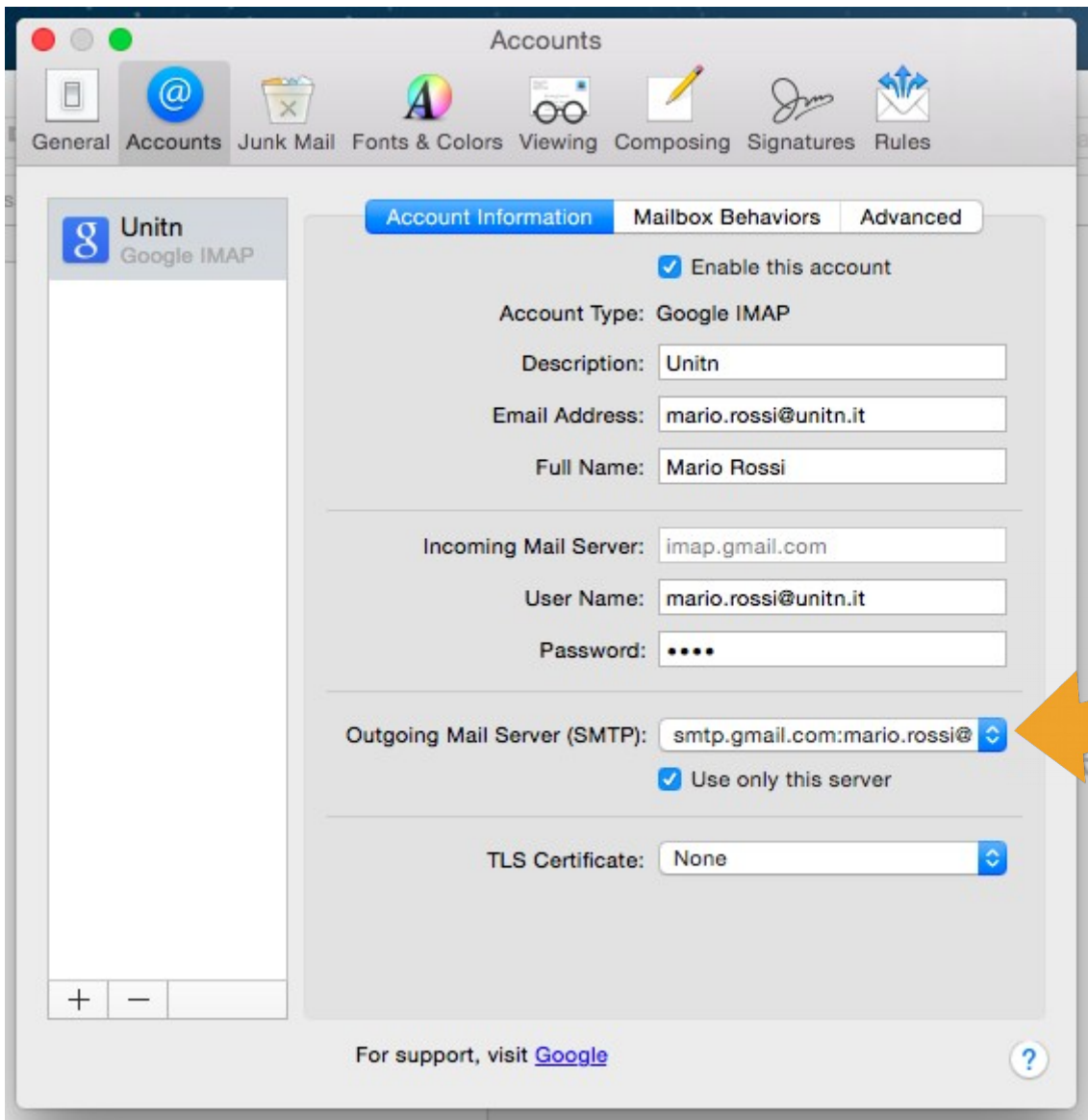
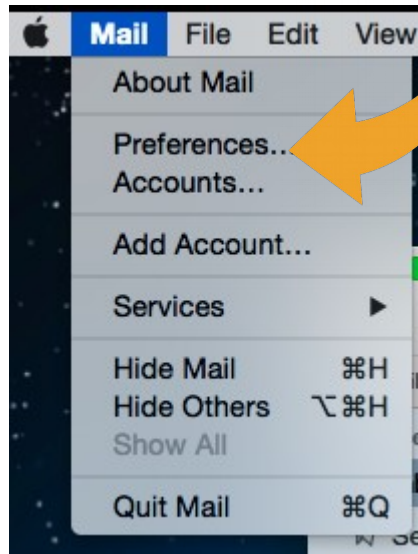
SMTP Server:

User Name:

Password:

# Rivedi le Impostazioni:

Mail → Preferences



Outgoing Mail Server (SMTP): smtp.gmail.com:mario.rossi@

