

802.1x Linux Fedora 19 (32/64bit)

Linux distributions are subject to a proper functioning of the network 802.1x . For doing it on the your distribution you must have two packages installed. This packages are :

- wpa_supplicant
- dhclient

as described in the wiki page [General Instructions for Linux \(for expert users\)](#)

If for some reason these software are not in your distribution, you must proceed with **Installation package** section, otherwise you can go directly to the **Configuration** section.

Installation package

With a command line :

- Open a terminal console and change your current user in **root** user with

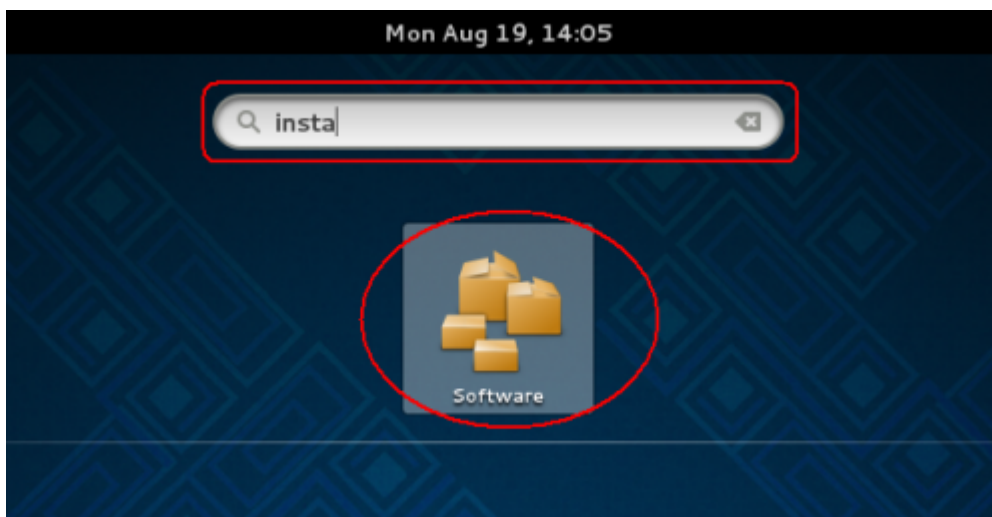
```
$ su -  
Password:  
[root@xxxxxx ~]#
```

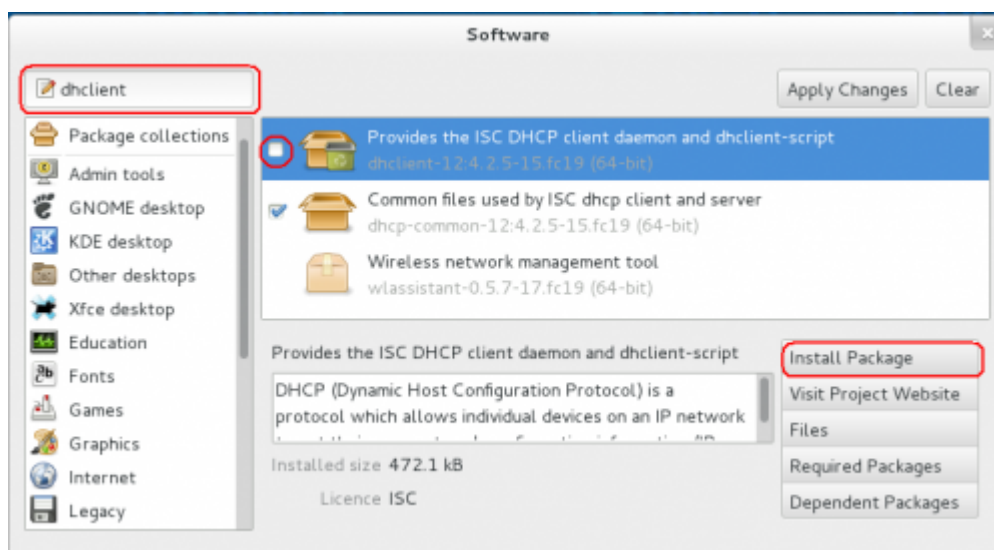
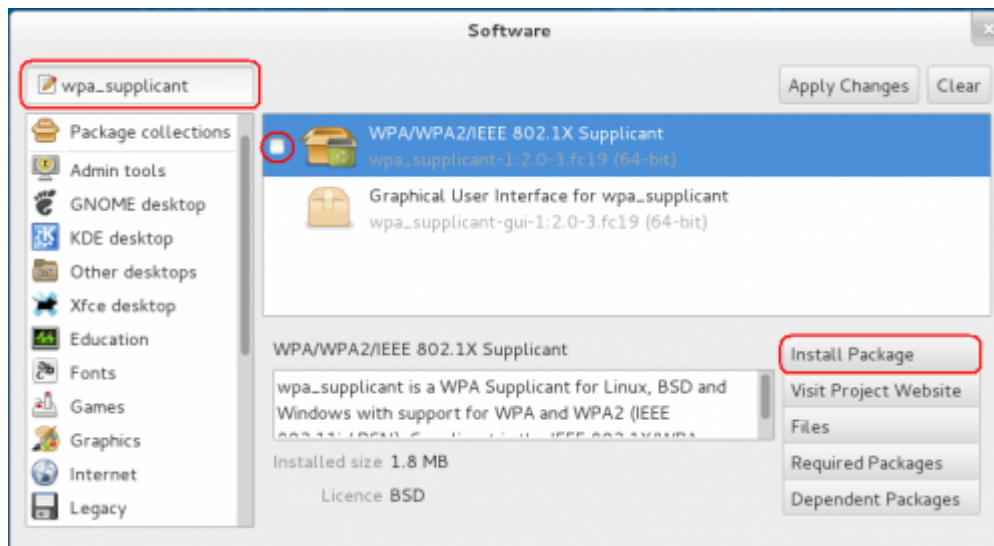
- then lunch **yum** with **install** option specificated the package **wpa_supplicant** and **dhclient**

```
yum install wpa_supplicant dhclient
```

With a Gnome GUI :

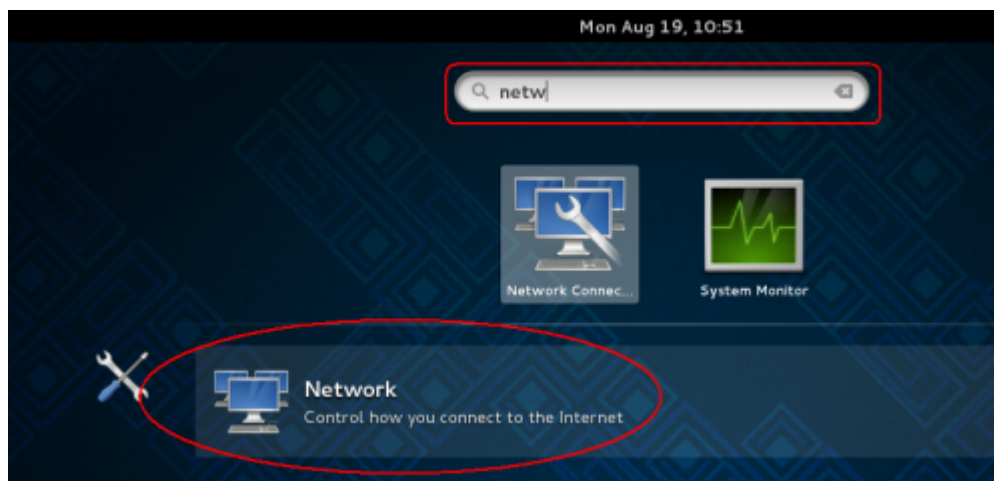
GUI gnome can install these packages by launching the **Application Software**. Once launched in the **search** field you can enter the names of the packages you want and installed it as shown in the figures below:





Configuration

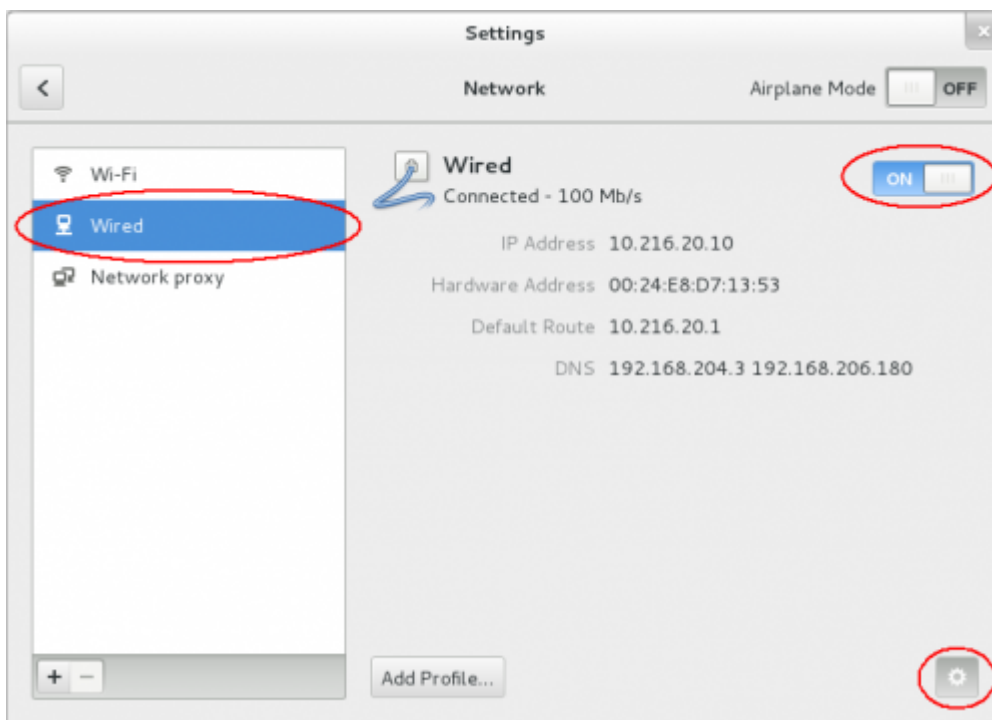
- Open your **Network Settings** by the Application Manager



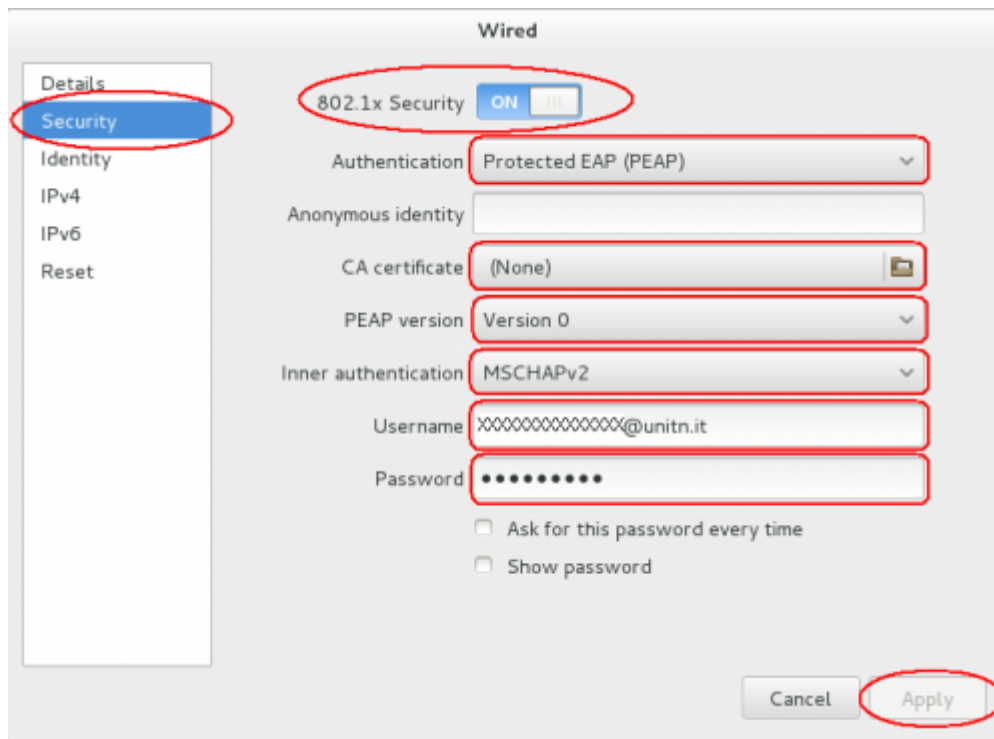
- Or open it in the **Network Icon** on your Status Bar



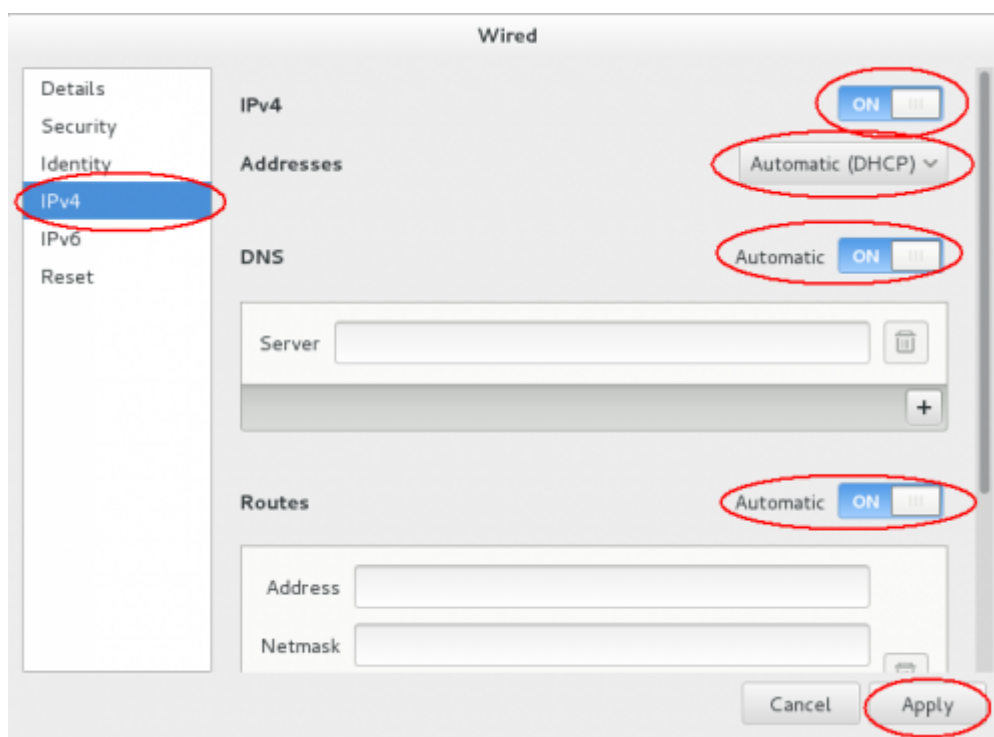
- In the Settings windows click on **Wired** voice on the left menu and then click on the **gear icon**



- Click the voice **Security** on the left menu in the Wired windows and then enable the **802.1x Security** switch
- Now compile the box:
 - **Authentication** with the **Protected EAP (PEAP)** value
 - **Anonymouse identity** leave blank value
 - **CA certificate** with **(None)** value
 - **PEAP version** with **Version 0** value
 - **Inner authentication** with **MSCHAPv2** value
 - **Username** with your **Unitn Account** with @unitn.it extension
 - **Password** with your **Unitn Password**
- and then click on the **Apply** button



- Now click the voice **IPv4** on the left menu in the Wired windows and then :
 - Enable **IPv4** switch
 - **Addresses** chose the **Automatic (DHCP)** value
 - Enable **DNS** and **Routes** switches and then leave all other box in blank value. Then click on the **Apply** button



Now when you restart your pc or when you re-login on your Gnome GUI, the system ask you for connect your pc on 8021.x network with your unitn credentials.



Here you click only on the **Connect** button. That its all...Enjoy it!

From:

<https://wiki.unitn.it/> - **Wiki UniTn**

Permanent link:

<https://wiki.unitn.it/pub:linux-fedora-en>

Last update: **2013/08/21 07:17**

